

The background of the slide is a collage of prehistoric cave paintings. In the upper left, there is a large, dark bull with prominent horns. To its right, a white horse is depicted in profile. Further right, there are several smaller, dark animals, possibly deer or stags. The lower half of the image shows a variety of animals in different colors, including a reddish-brown bull, a white spotted bull, and several dark-colored animals, all rendered in a style characteristic of Paleolithic cave art. The text is overlaid on a semi-transparent dark band across the middle of the image.

De l'ombre à la lumière,
l'art occidental à sa naissance

première partie



L'abri fondateur

L'enfance de l'art,
les peintures rupestres
de Chauvet et Lascaux

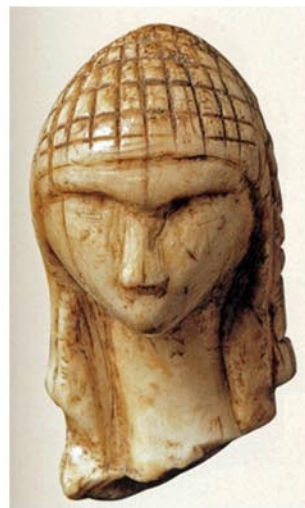
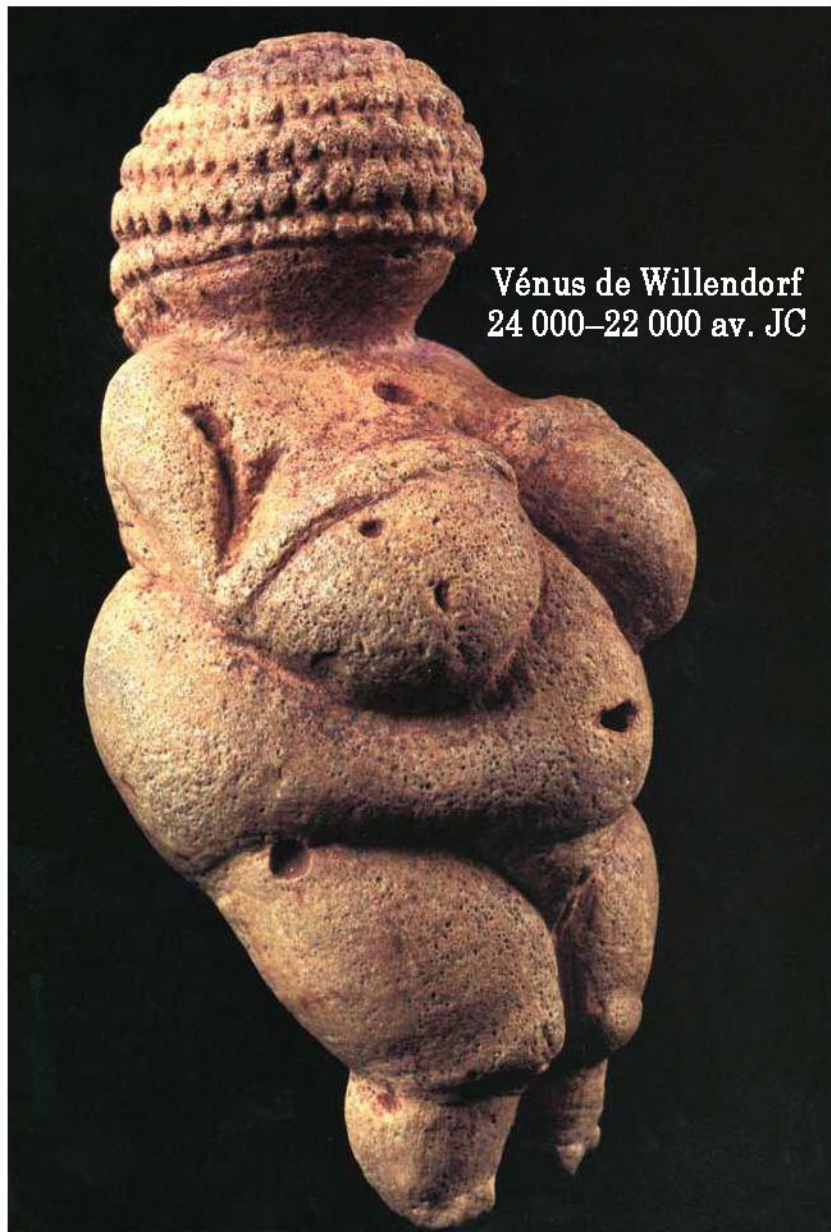
par Henri Yéru







Les vénus



Dame de Brassempouy
28 000 avant JC



Vénus de
Trasiméno

La Vénus de Lespugue
23 000 avant JC



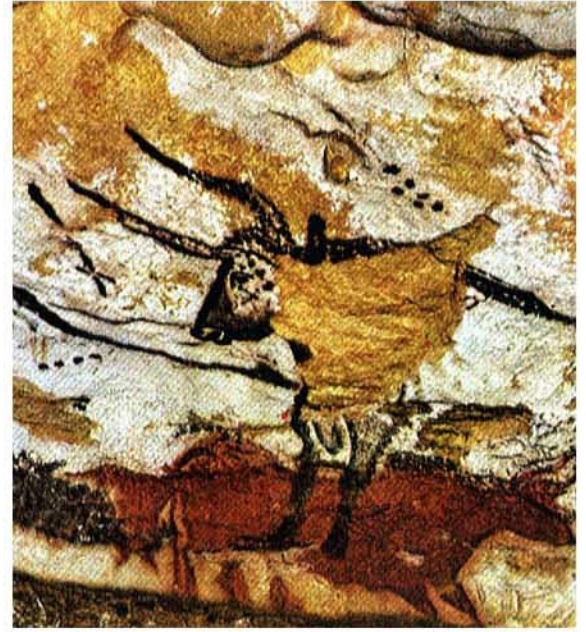


LASCAUX

Montignac - 24



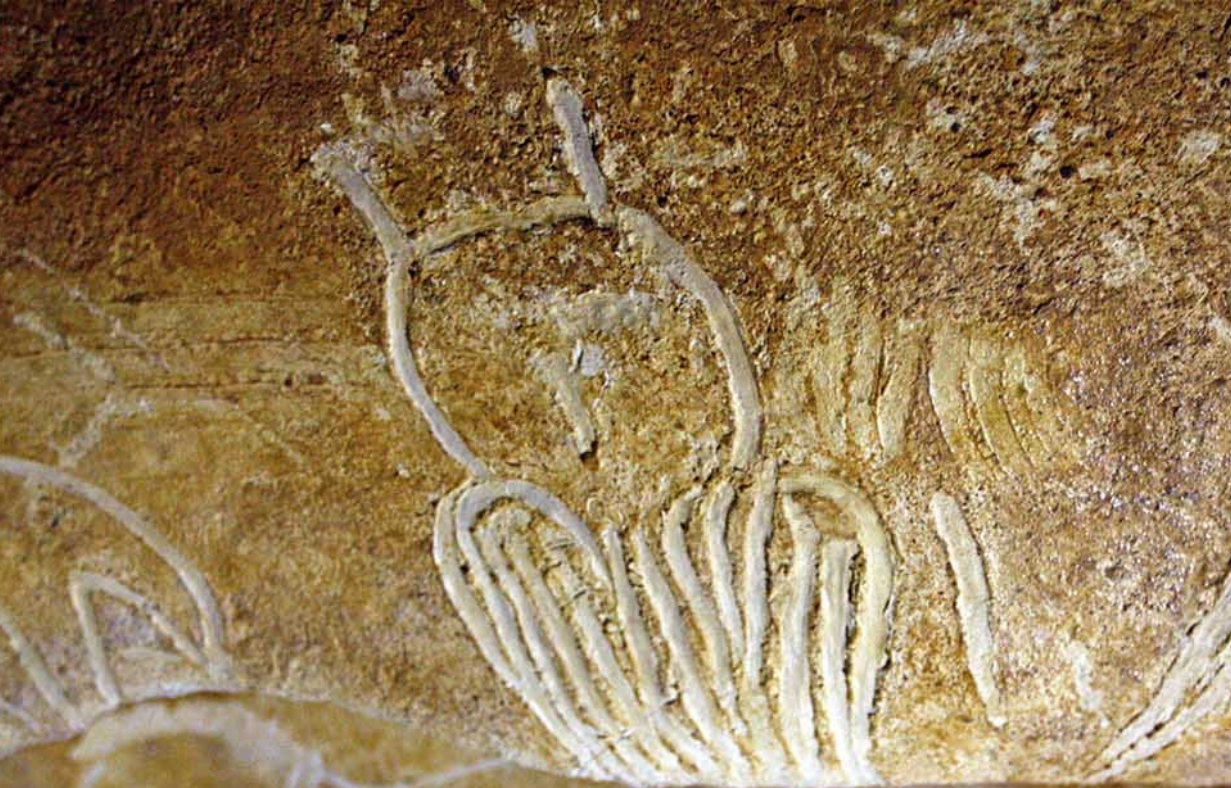






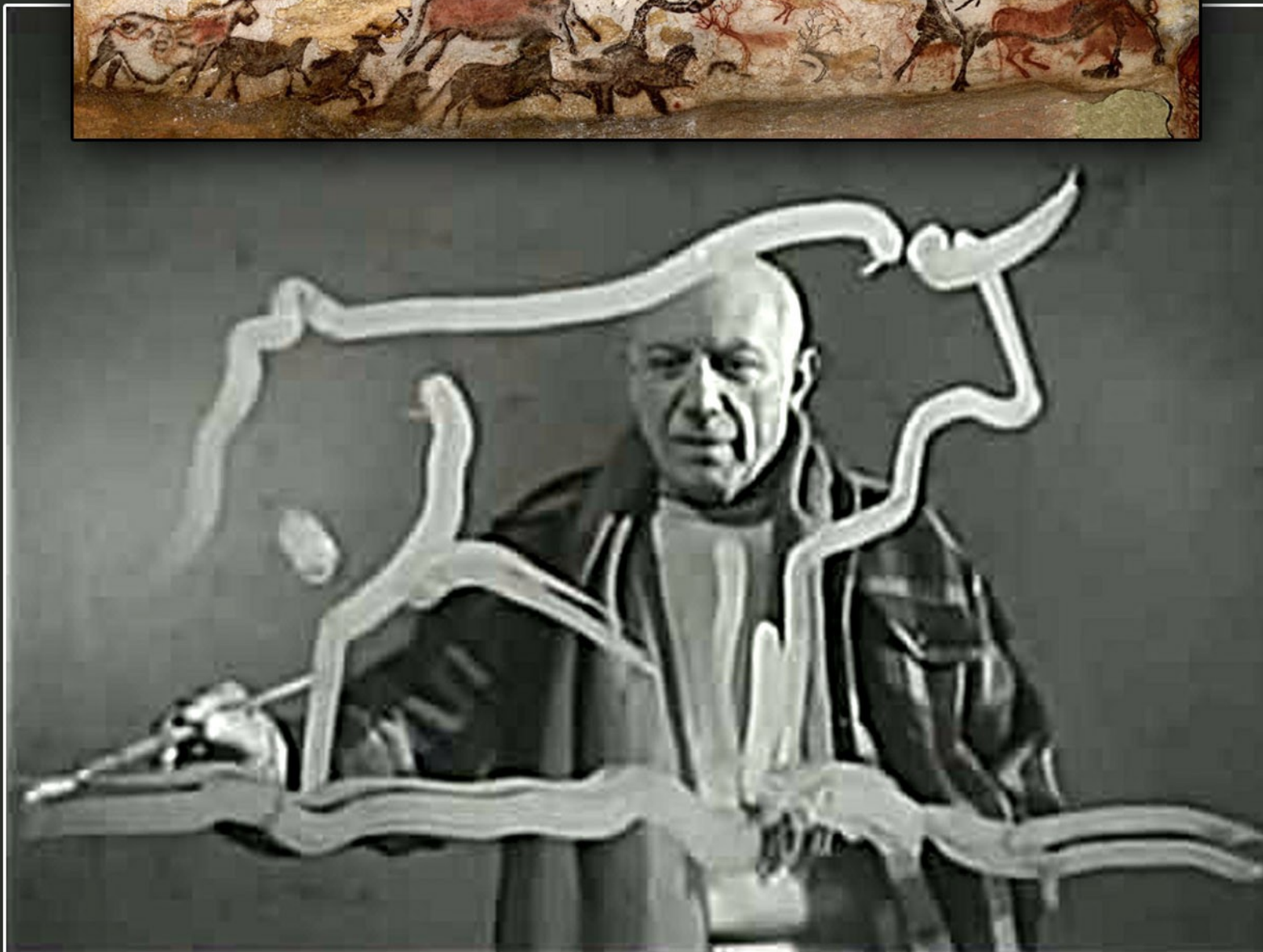


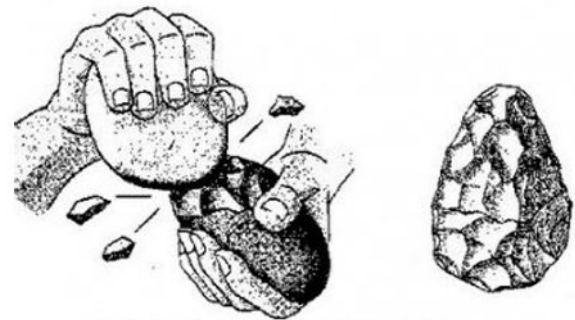












Une pierre dure est utilisée pour détacher les éclats.













